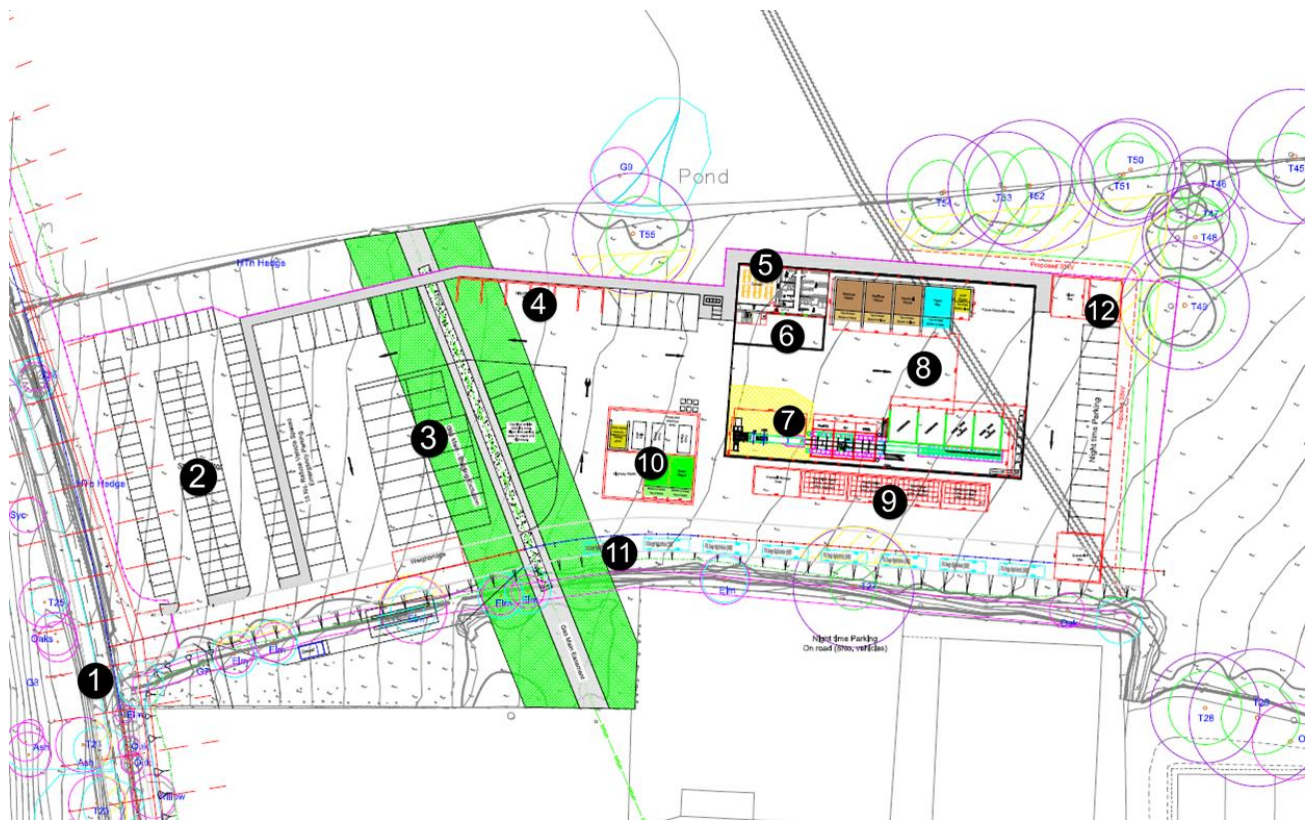


Appendix III

Proposed Central Depot Layout (Includes Phase 2 extended to accommodate Highways Waste – subject to separate Business Case)



Key

1. Site entrance of Ffordd Y Graig, Denbigh
2. Staff car parking
3. Fleet parking
4. Garden waste / Future bays for highway materials
5. Office accommodation and mess / training facilities
6. Stores
7. Bailing and sorting equipment
8. Tipping bays for residual waste, food waste , AHP and recyclables (Phase 1)
9. Stored bailed materials
10. Future building as part a phase 2 development, subject to separate business case to accommodate highway waste
11. Weighbridge and vehicle wash
12. Glass tipping bay and containment bay (to comply with regulations/ permitting)

**Depot layout subject to change as a result of planning consultation process.*